



**COMPANY PROFILE**

# **SHRI VISHWAKARMA FABRICATORS**



**HEAVY METAL FABRICATORS**

# INFORMATION

AT A GLANCE

MONTHLY OUTPUT

**100 TONS**

CUSTOMERS/FACTORIES  
SERVED:

**900+**

PRODUCT  
DIVERSIFICATION

**40+**

# CONTENTS

1. ABOUT US

---

2. GALLERY

---

3. PSA OXYGEN PLANT

---

4. COMPANY'S BACKGROUND

---

5. PROMOTERS

---

6. WORKSPACE

---

7. MANPOWER

---

8. MACHINERY

---

9. SISTER CONCERNS

---

10. SAFETY MANUAL

---

11. IMPORTANT JOBS EXECUTED

---

12. FUTURE PLANS

---

## ABOUT US

Shri Vishwakarma Fabricators is an Indian based Heavy Fabrication Unit and an Industry leader that is expertized in all types of Steel and Metal Fabrication works including Forming, Fabricating, Embossing, Machining, Rolling, Bending, Shearing, Assembly etc. Our team has earned its place in today's competitive market through a combination of our core beliefs and the consistent delivery of superior services and quality end products. The individualized care and unwavering attention that we bring to all of our projects are deciding factors in why our clients continuously choose us.

We understand that it takes more than a qualified provider to win the customer's confidence, especially when it comes to complex or high value projects. That is why from the very beginning, our company has been built upon a strong foundation of integrity, honesty, safety and quality. We build trust based, collaborative relationships with our clients and industry partners. This is what sets us apart and what helps us provide continuous customer satisfaction, win repeated business and establish long term business connections.

Through the techniques of our Engineers we provide the best and prompt Services that has to offer. Our completed projects stand as proof of the quality of work that we do as per TPIA & ISO standards. We challenge ourselves to meet all our customer's needs. We have set many benchmarks in the Engineering world through our services from the past 45 years and have solution to all types of problems irrespective of size and volume.

We guarantee effective and comprehensive representation for your business. Our reputation and history of successful companies and clients speak for themselves. We pride ourselves in helping businesses - large or small, that simply need to know how to proceed in today's economy. Our firm is leading the way in global business. With ever changing environment, you need someone on your side who knows how to accomplish the unthinkable.

## OUR ESTEEMED CUSTOMERS



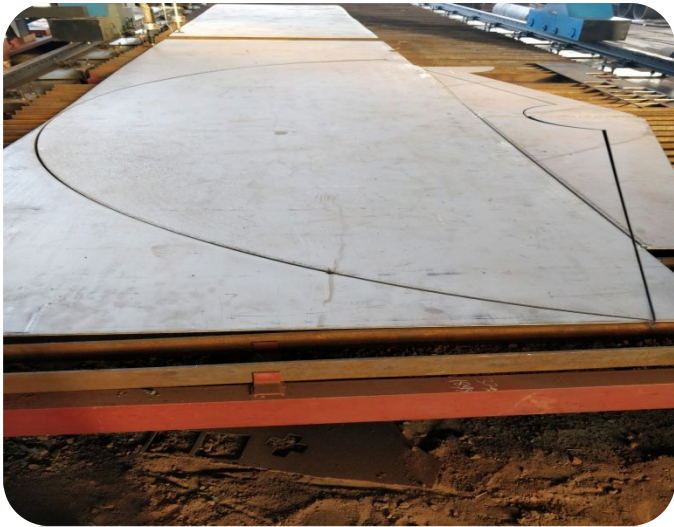


# GALLERY









# PSA OXYGEN PLANT

*Better Quality & Higher Performance...*

SHRI VISHWAKARMA FABRICATORS



## AIR COMPRESSOR

Screw Type, Air Compressors are used in the system which provide supreme efficiency and ultimate reliability



## AIR DRYER

Air Dryer used in the system provide cool and moisture free air which further enhances system efficiency.

## PRESSURE FILTER

World class filters used in the system help to remove Dust particles, Oil Aerosols and even provide Bacterial protection.

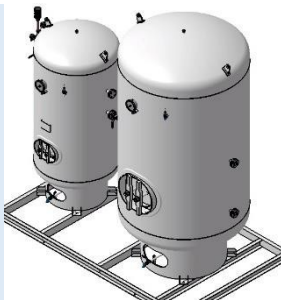


## PSA TOWERS

It is the heart of the system which generates oxygen up to the purity of  $93 \pm 3\%$ . The components like valves and instruments used in it are highly reliable and as per industrial standards.

## PLC BASED CONTROLLER

Controls the cyclic operation of the system and also displays the concentration of oxygen being produced.



## OXYGEN STORAGE TANKS

The storage and buffer tank hold the oxygen gas and provide it as per demand. The Valves, Pressure gauges and Drain valve make them safe and reliable. They are coated with Anti-Corrosive paint for better life.



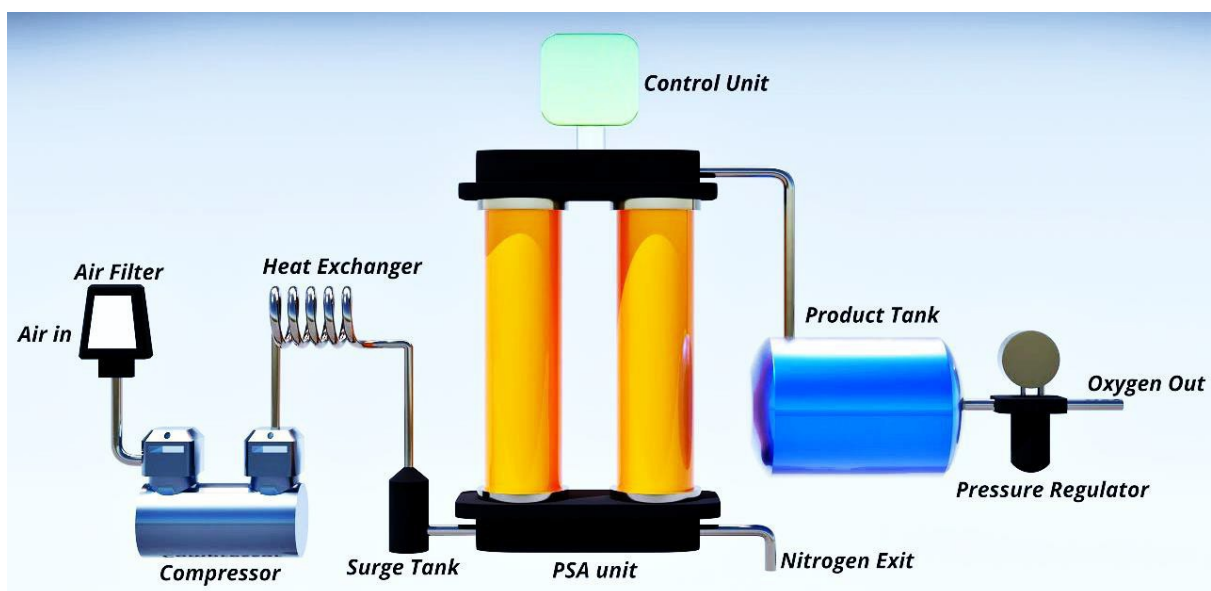
## Why Onsite Generation?

Oxygen is vital at all levels of the health-care system and only high-quality, medical-grade oxygen should be administered to patients. With onsite generation of oxygen, flexible and reliable supply of it can be achieved without compromising on the quality. Some other benefits of PSA based Oxygen generation system are –

- Supplies instantly on Demand.
- Cylinder availability not a problem anymore.
- Risk from high-pressure low-quality cylinders eliminated.
- Concentration of Oxygen up to  $93 \pm 3 \%$
- Monitor oxygen concentration yourself.
- And many more...

## What is PSA?

Pressure swing adsorption (PSA) is the process by which ambient air passes through an internal molecular sieve [zeolite granules or membranes], which has a large enough total surface area to separate nitrogen ( $N_2$ ) from the air, concentrating the remaining oxygen ( $O_2$ ) to known purity. It typically consists of an air compressor, dryer, filters, dual separation chambers, a reservoir, and controls.



*Our Oxygen plants are designed in such way, that they can work at site 24 x 7 without any trouble. All the components used in generators are highly reliable and tested as per Industrial standards. All the safety precautions have been addressed to give uninterrupted O<sub>2</sub> supply.*

*Our customers can choose the right model according to their Oxygen demands.*

<b>Generation Capacity</b>	<b>Compressor capacity/Power</b>	<b>O<sub>2</sub> Storage Volume</b>	<b>Buffer Storage Volume</b>	<b>Total Power Consumption</b>
LPM	CFM/HP	LITERS	LITERS	kW
115 – 125	70 / 15	1000	2000	12.5
150 – 165	90 / 20	1000	2000	17.5
210 – 230	130 / 30	1500	3000	25
275 -- 300	165 / 40	2000	4000	34

*The plants themselves can be turn-key units, i.e., they can be started with just a push of a button, however, the staff operating and maintaining them require little training. A maintenance schedule is needed to prevent malfunctions. Adequate supplies and spare parts are needed to allow uninterrupted operations. Should repairs be required, these are carried out by skilled personnel of manufacturer or distributor staff.*



## HEAVY FABRICATORS APPROVED BY -

- **BHEL**
- **IBR**
- **NTPC**
- **NPCIL**
- **LLOYED**

**AND DEFENCE SECTOR**

## COMPANY'S BACKGROUND

**S**hri Vishwakarma Fabricators started its operation in 1988 as a partnership concern having works & office located at the present premises itself. Company started as a Job work and Fabrication Franchises for the leading manufacturing units of Bhopal & the major work was Bending & Rolling of steel plates , Dish-end making and other components as per QAP & ASME standards.

Over a period of time SVF has developed itself as an expert of quality steel fabrication works and all types of job works & special purpose equipment manufacturer.

Today, SVF with its associated sister concerns, is profoundly known in this “ central part ” of the country as an industrial house dealing in Heavy engineering processing, Large Dish-end manufacturing, Fabrication of chemicals plant and equipment, Reactor vessels , E.O.T. Cranes, Silos, Dust collection system, Large test rigs, etc.

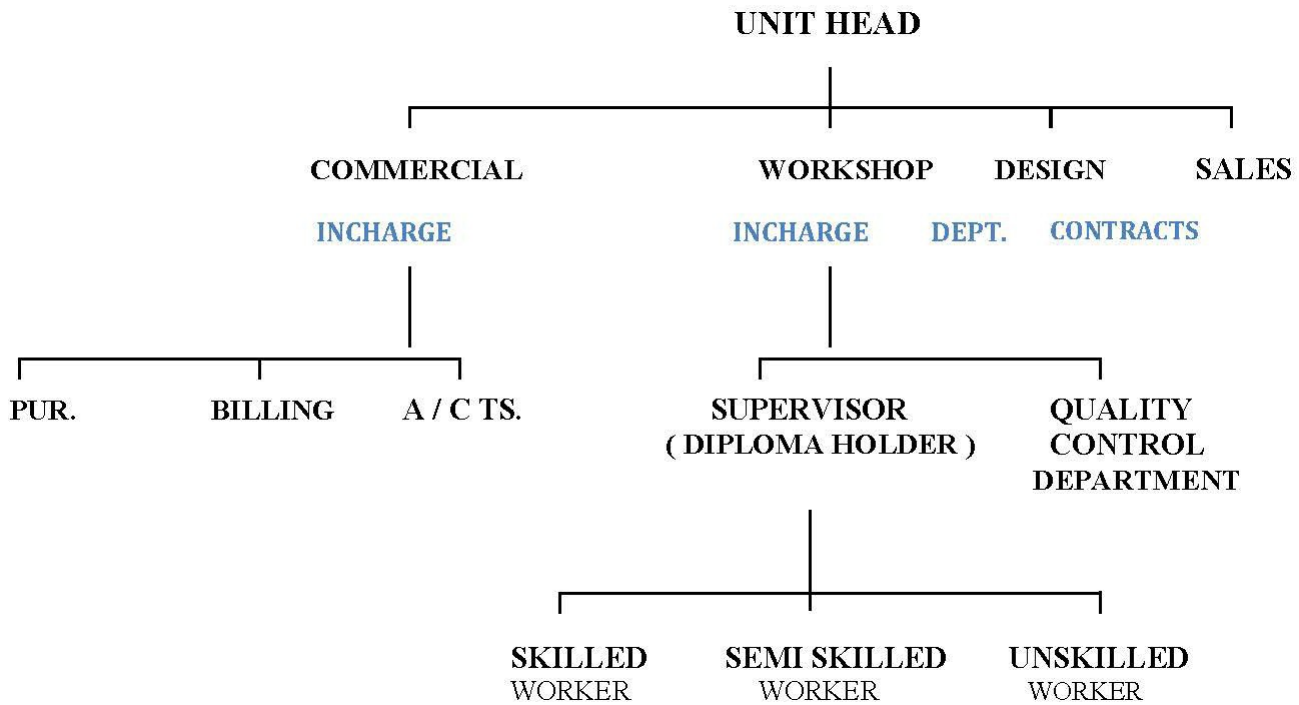
## PROMOTERS

**S**hri Vishwakarma Fabricators was promoted by It. Shri Jagatram Ji who was having more than 30 years of experience in heavy engineering fabrication and all types of precised job work & has worked with leading industrial organization of Bhopal as a production chief. Today, all four sons of It. Shri Jagatram Ji, are well experienced & trained, looking after the complete activities of this unit & other sister concerns.

# WORK PLACE

Shri Vishwakarma Fabricators has total working shed area of around **15,000 sq. Ft.** , well equipped with all the modern office equipments, filing cabinets etc. & store space - **1000 sq. Ft.** on a 'plot' area of **30,000 sq. Ft.** Open area is utilized for storage of raw materials, movement of carrier vehicles, labour/ chowkidar quarters , toilets , lawn etc.

# MAN POWER





# MACHINERY - AS PER LIST ENCLOSED

SNO	TYPE OF MACHINE	CAPACITY	NOS	TECHNICAL SPECIFICATION
1	HYDRAULIC PRESS [ FOR PLATE BENDING ]	600 TON	01	2500 X 1250 ( BED) x 1250 HEIGHT [ UP- TO 80 MM ]
2	HYDRAULIC PRESS [ FOR PLATE BENDING ]	600 TON	01	6500 X 400 X 16 MM THK
3	HYDRAULIC PRESS [ FOR PLATE BENDING ]		01	5 MM THK X 2500 LONG
4	HYDRAULIC PRESS [ FOR PLATE BENDING ]	400 TON	01	4200 X 300 (BED) X 300 HT
5	HYDRAULIC PRESS	300 TON	01	3000 X 600 (BED) X1250 HT.
6	HYDRAULIC PRESS [4000 ID DISHEND]	500 TON	01	( FOR DISHEND MAKING/STRAIGHTENING )
7	HIMALAYA PLATE ROLLING MACHINE		01	50THK X 2500 WIDTH X 800 DIA MINIMUM
8	PLATE ROLLING MACHINE		01	65THK X 1500 WIDTH X 400 DIA MINIMUM & 16THK X 3000 WIDTH X 350 DIA MINIMUM
9	PLATE ROLLING MACHINE		01	40THK X 900 WIDTH X 300 DIA MINIMUM
10	PLATE ROLLING MACHINE		01	10THK X 1500 WIDTH X 180 DIA MINIMUM & 03THK X 1200 WIDTH X 100DIA MINIMUM
11	CNC PLAZMA CUTTING MACHINE		01	2500 X 12000
12	PLANO MILLER MACHINE (MARIO CARNAGHI - ITALY)		01	12000 X 2500 x 1800

13	DISHEND FORMING SPINNING MACHINE		01	25 MM – 2000 O/D
14	PIPE BENDING MACHINE		01	0.5" TO 8" DIA PIPE BENDING
15	PIPE BENDING MACHINE (90° BEND)		01	10MM DIA TO 50MM DIA
16	HYDRAULIC SHEARING MACHINE		01	M.S. 8MM X 2500 MM CUTTING S.S. 6MM X 2500 MM CUTTING
17	SURFACE PLATE		01	1600 X 3000
18	BED PLATE		04	GROUND AREA 3600 X 8000
19	BED PLATE		01	1500 X 3000
20	OVERHEAD CRAIN		01	25 TON CAPACITY
21	OVERHEAD CRAIN (ELECTRIC)		02	3 TON CAPACITY
22	OVERHEAD CRAIN (ELECTRIC)		01	8 TON CAPACITY
23	WELDING RECTIFIER (ADVANI)		01	450 AMPS.
24	WELDING RECTIFIER (KLEIN) [ INVERTER BASE WELDING RECTIFIER ]		01	400 AMPS.
25	WELDING RECTIFIER ( SUN RISE )		03	400 AMPS
26	CO2 WELDING MACHINE		02	450 AMP.
27	WELDING TRANSFORMER		01	300 AMP.
28	WELDING GENERATOR		01	400 AMPS

29	W. ROD HEATING OVEN		02	230 V / 3KW. WITH TEMPERATURE GAUGE
30	W. ROD HEATING CARRY OVEN		04	230 V / 0.5KW.
31	AIR COMPRESSOR		01	25 CFM/10KG/CM <sup>2</sup>
32	PAINT THICKNESS GAUGE [ ALCO METER ]		01	PULSECHO MAKE
33	WELDING GOUZING TOURCH		01	
34	PILLAR TYPE DRILL MACHINE		01	32MM DIA
35	HACKSAW CUTTING MACHINE		01	
36	PLASMA CUTTING MACHINE (SS)		01	UPTO 60MM TK.
37	SAW WELDING MACHINE (ESAB)		01	600 AMP
38	VACUUM PUMP MACHINE		01	
39	RADIAL DRILL MACHINE		01	UPTO 70MM DIA
40	MAGNETIC DRILL MACHINE		01	UPTO 25MM DIA DRILLING

Other working tools like Hand Grinders

Portable Drill machines

Gas Cutting (8 Nos.)

Chain pulley blocks (8 Nos.)

Pug Machine (2 Nos.) etc are available according to need.

## TESTING FACILITIES -

1. Vernier Caliper
2. Hydro Pressure Test Facility
3. Compressed Air Testing Facility
4. Micro Meter
5. Filler Guage
6. Paint Thickness Tester
7. Vacuum Pressure Testing Facilities

## SISTERS CONCERNS :

### (I) M\S J.S. FABRICATORS

FABRICATION UNIT

ADD – 17/H IND. AREA GOVINDPURA BHOPAL

PLOT AREA - 20000/- Sq. Feet

Shed Size – 40 Feet x 80 feet

All Type Machines for Fabrications work

### LIST OF MAJOR MACHINERIES

S NO	TYPE OF MACHINES	CAPACITY	NOS	TECHNICAL SPECIFICATION
1	LATHE MACHINE		3	12 FEET MAKER - VIG
2	LATHE MACHINE		1	10 FEET MAKER- VIG
3	LATHE MACHINE		1	6 FEET MAKER – SAIMA – PADOVA-ITALIA
4	LATHE MACHINE		1	14 FEET MAKER- TOVAGLIERI MECCANICA
5	HYDROLIC BENDING MACHINE		1	6000 MM LONG

6	ROLLING MACHINE		1	16 MM X 3600 WIDTH
7	ROLLING MACHINE		1	6 MM X 3000 WIDTH
8	RADIAL DRILL MACHINE		1	MAKER - BERGONZI
9	RADIAL DRILL MACHINE		1	MAKER – CASER PAVIA ITALI
10	RADIAL DRILL MACHINE		1	MAKER - CMR
11	RADIAL DRILL MACHINE (SMALL)		1	MAKER – ATLAS MACHINING TOOLS
12	SECTION ROLLING MACHINE		1	
13	BED PLATE		1	1500 X 3000 MM
14	PIPE CUTTER MACHINE		1	MAKER - DeWalt
15	WELDING SET (CO <sub>2</sub> )		2	MAKER - PANASONIC
16	WELDING SET		1	RECTIFIER SINGLE PHASE
17	HYDRAULIC JACK		1	CAPACITY – 50 TON
18	GRINDERS		10	4” 5” 7” 9”
19	OVERHEAD CRANE		4	CAPACITY 10 TON (TWO) 5 TON (TWO)

**(II) M\ S B.L. ENTERPRISES**

FABRICATION UNIT

ADD – 9/I SEC-H IND. AREA GOVINDPURA  
BHOPAL (462023)

PLOT AREA - 50000 SQ FEET

Shed Size –50 FEET X 100 FEET

All Type Machines for Fabrications work

**LIST OF MAJOR MACHINERIES**

S NO	LIST OF MACHINES	CAPACITY	NOS	TECHNICAL SPECIFICATION
1	LATHE MACHINE		1	16 FEET LONG 1800 MM CHUCK DIA 3600 MM O/D MACHINING
2	LATHE MACHINE		1	4 FEET LONG MAKER - JMT
3	LATHE MACHINE		1	6 FEET LONG MAKER - ESSO
4	ROLLING MACHINE		1	40 MM X 2500 MM WIDTH

5	RADIAL DRILL MACHINE		1	UPTO 65 MM MAKER – BERGONZI
6	BED PLATE		1	6000 MM X 7000 MM
7	WELDING MACHINE (CO <sub>2</sub> )		1	MAKER - PANASONIC
8	WELDING MACHINE RECTIFIER		3	400 AMP
9	HYDRAULIC JACK		1	CAPACITY – 100 TON
10	GRINDERS		12	4” 5” 7” 9”
11	OVERHEAD CRANE		2	15 TON & 30 TON



# SAFETY MANUAL

SVF is dedicated to protecting and preserving the working environment in a responsible manner. We are very proud of how we work and our safety track record.

When it comes to safety, our philosophy is that any successful job or project is directly attributed to exceptional performance and well-planned services. Our unmatched safety record is a result of avoiding less than desirable workmanship and errors associated with rushing, stress, and poor work conditions.

The majority of incidences are attributed to human error, thus minimizing or eliminating such conditions results in fewer incidents. SVF's management is committed to continuous development and improvement of safety programs to protect our team members on all job sites.

## **OUR INTERNAL SAFETY PROGRAM INCLUDES:**

1. A daily job hazard analysis meetings.
2. All staff and team members are trained to look at safety before beginning any task to reduce risk.
3. All team members are routinely trained and updated on the best industry safety practices.
4. All new team member are extensively trained before beginning as an active member of SVF team.
5. All team members are rewarded for operating in a safe and productive manner.
6. All team members hours are tracked diligently to prevent fatigue and mitigate the risks related to exhaustion or stress.

## IMPORTANT JOBS EXECUTED

Shri Vishwakarma Fabricators executed many large jobs successfully under third party inspection too.

### **SOME OF THE BIG JOBS EXECUTED ARE :**

1. Fabrication of S.S. Silos for Proctor & Gamble Ltd.
2. Fabrication & Bending of earth moving machinery parts for Larsen & Toubro Ltd.
3. Fabrication of "Engine lifting Tackle" (06 tons) for a contractor of Indian railways.
4. Fabrication of pole stacking device for hydro generator unit of Crompton Greaves Ltd.
5. Fabrication of large motor frames for M.A.C.T.
6. Fabrication of complete chemical processing plant for Indian pest control.
7. Fabrication of "Mould" for top & bottom gear case for m/s Permali Wallace Limited.
8. Fabrication of "Large test rigs" for govt. of India research lab. Bhopal.
9. Fabrication of MS Chimneys.
10. Fabrication of distributor Segments Assembly, Water box Assembly, H.P. Heater shell & Skirt Assembly, R.E. joint assembly. Stay Ring - D.T. Cone. discharge ring, Stator Frame, Pit liner-draft tube, Spiral Casing, Hp/Lp pressure receivers, Oil sump, Shafting Assembly etc. for Bharat Heavy Electricals Limited Bhopal. & VA. Tech Hydro.

## FUTURE PLANS

Shri Vishwakarma Fabricators wish to expand its activities nationally as well as globally & consolidate its position as a quality supplier of large fabricated jobs. We will keep fulfilling our customers promise as always and stick to the uncompromising commitment to the quality of the work. We would also be developing visibility to generate new business leads.

---

## IMPORTANT DETAILS

- (1) GSTIN: 23AAMFS5541E1ZA
- (2) DIC Registration: 104407176
- (3) Registration Under Factory Act: 29/12485/BPL/2MI
- (4) ESI Registration No: 18-13394-95
- (5) PAN NO.: AAMFS5541E
- (6) TIN No.: 23243601007
- (7) Bankers Name: S.B.I. (01253)  
SME Branch Govindpura  
Bhopal M.P.  
A/C NO. - 10116947242  
IFS. CODE - SBIN0001253

## REG. OFFICE AND WORKS



Plot no. 9-H , sector – H  
Industrial area ,  
Govindpura , Bhopal .  
Pin – 462023 (M.P)



0755 – 2589152  
0755 - 4261152  
+91-9977888159



[svf1@rediffmail.com](mailto:svf1@rediffmail.com)



[www.ShriVishwakarmaFab.com](http://www.ShriVishwakarmaFab.com)